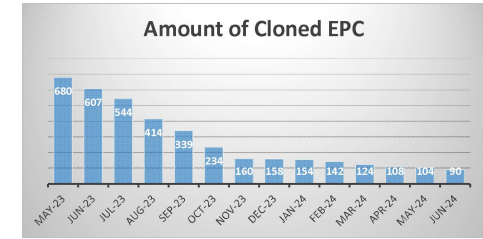
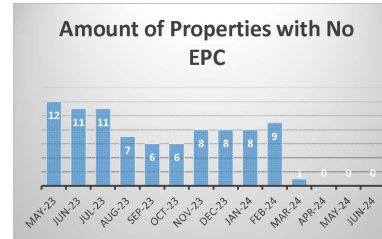
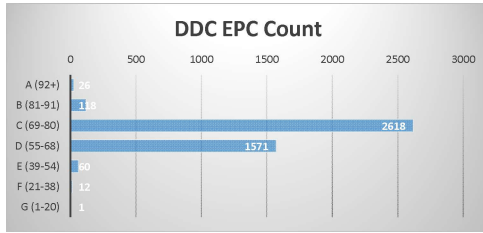


EPC Report

Dover District Council



EPC Band	Count
A (92+)	26
B (81-91)	118
C (69-80)	2618
D (55-68)	1571
E (39-54)	60
F (21-38)	12
G (1-20)	1
Blank	0

4406

Gas -Domestic	4013
Electric	117
Renewables	37
Oil	72
Solid Fuel	6
Communal Syst	160
LPG	1

4406

EPC Band	Apr-24	May-24	Jun-24	Jul-24	Aug-24	Sep-24	Oct-24	Nov-24	Dec-24	Jan-25	Feb-25	Mar-25
A	26	26	26	0	0	0	0	0	0	0	0	0
B	116	117	118	0	0	0	0	0	0	0	0	0
C	2607	2610	2618	0	0	0	0	0	0	0	0	0
D	1586	1580	1571	0	0	0	0	0	0	0	0	0
E	59	60	60	0	0	0	0	0	0	0	0	0
F	12	12	12	0	0	0	0	0	0	0	0	0
G	1	1	1	0	0	0	0	0	0	0	0	0

Actual	4298	4304	4316	0	0	0	0	0	0	0	0	0
Cloned	108	102	90	0	0	0	0	0	0	0	0	0
Blanks	0	0	0	0	0	0	0	0	0	0	0	0

Expired	29	23	26	0	0	0	0	0	0	0	0	0
---------	----	----	----	---	---	---	---	---	---	---	---	---

EPC Band	Apr-23	May-23	Jun-23	Jul-23	Aug-23	Sep-23	Oct-23	Nov-23	Dec-23	Jan-24	Feb-24	Mar-24
A	24	24	24	24	24	24	24	26	26	26	26	26
B	83	83	86	89	89	90	90	115	115	115	115	115
C	2335	2384	2408	2441	2477	2518	2549	2592	2594	2592	2592	2600
D	1821	1768	1747	1715	1680	1644	1613	1597	1594	1594	1593	1592
E	67	66	61	58	60	57	56	58	58	58	58	59
F	9	10	11	10	11	12	13	13	13	13	13	13
G	1	1	1	1	1	1	1	8	1	1	1	1

Actual	3575	3655	3732	3794	3928	4007	4112	4242	4243	4245	4256	4274
Cloned	765	680	607	544	414	339	234	160	158	154	142	124
Blanks	11	12	11	11	7	6	6	8	8	8	9	1

Expired	54	58	39	40	37	29	23	27	25	36	31	25
---------	----	----	----	----	----	----	----	----	----	----	----	----

EPC Band	Apr-22	May-22	Jun-22	Jul-22	Aug-22	Sep-22	Oct-22	Nov-22	Dec-22	Jan-23	Feb-23	Mar-23
A		0	0	0	0	0	0	0	0	0	24	24
B		47	77	77	76	77	77	79	79	80	81	81
C		2076	2100	2105	2115	2165	2176	2216	2213	2234	2269	2311
D		2018	2019	2019	2011	1969	1978	1939	1944	1921	1889	1851
E		117	113	112	110	103	83	75	73	71	66	66
F		9	9	9	9	9	9	10	10	9	9	8
G		0	0	0	0	0	0	0	0	1	1	1

Actual	0	2799	2851	2858	2879	2991	3063	3236	3282	3325	3405	3498
Cloned	0	1504	1469	1464	1442	1332	1260	1083	1037	991	934	844
Blanks	0	42	25	20	17	13	13	13	13	12	12	10

Expired		78	110	79	52	44	57	51	54	35	30	42
---------	--	----	-----	----	----	----	----	----	----	----	----	----